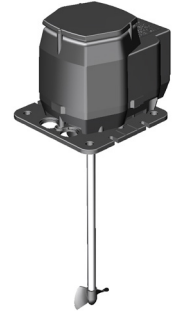


MD-50 series is an agitator solution that satisfies the most restrictive **low budget requirements** while granting **good performances**. The **wide range of configurations** available makes it a **versatile solution** for many installations.



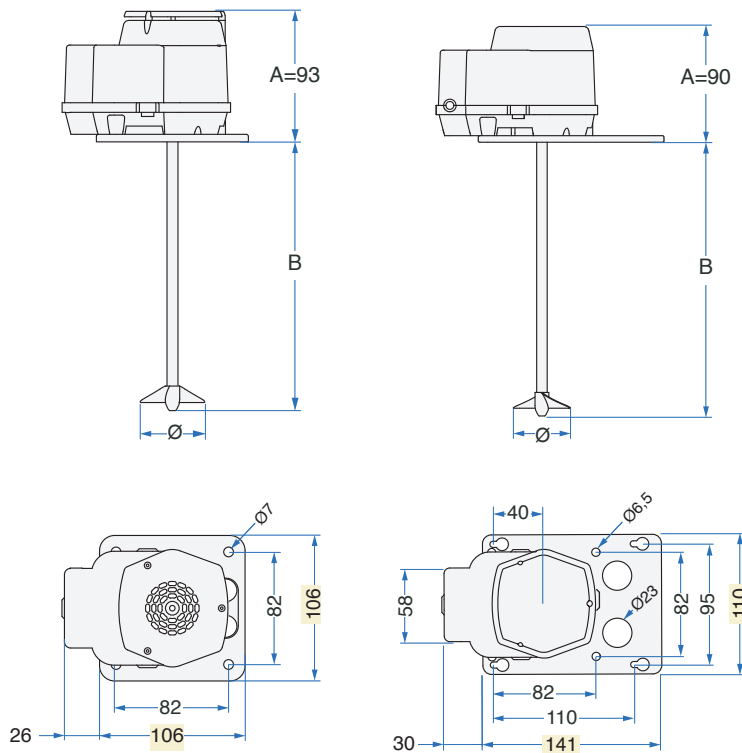
# MD-50



## TECHNICAL SPECIFICATIONS



<b>Category</b>	Protected AGITATOR.
<b>Windings</b>	Single-phase motor. Insulation Class F.
<b>Motor body</b>	Shaded poles motor.
<b>Protection</b>	IP 31 ingress protection rating.
<b>Safety</b>	Built-in thermal motor protection system.
<b>Ball bearings</b>	NSK and SKF (long-life) self-lubricant bearings or equivalent, in semi-rigid noise-damping housings.
<b>Motor shaft</b>	AISI 303 INOX steel.
<b>Fastening parts</b>	INOX steel or corrosion-resistant materials.
<b>Motor parts</b>	Thermoplastic motor parts resistant to high temperature.
<b>Cooling system</b>	Air cooled pump with a suction speed of 3,1 m/s.
<b>Operation</b>	Power supply 220-240 Volts - 24 hours a day non stop. Clean non drinkable water only.
<b>Regulations</b>	Complying with EN60335-2-41:2003/A2:2010 and WEEE/RoHs directives.
<b>Note</b>	<b>PATENTED device.</b> Read the instruction booklet for correct set up and use. Designed for industrial use with CE certified cooler machinery only. Not intended for food contact.



TYPE	Volt	Hz	Amp	Watt	RPM	A	B	Propeller Ø [mm]	Weight [Kg]
MD-50	230	50-60	0,50	42	2850-3400	93/90	155/185/220	40x30° 2 Blades	1,7
MD-50	230	50-60	0,50	45	2850-3400	93/90	155/186/221	45x30° 2 Blades	1,7
MD-50	230	50-60	0,50	45	2850-3400	93/90	155/187/220	50x15° 2 Blades	1,7
MD-50	230	50-60	0,50	46	2850-3400	93/90	155/188/221	55x15° 2 Blades	1,7
MD-50	230	50	0,50	47	2850-3400	93/90	160/193/226	62x15° 2 Blades	1,7